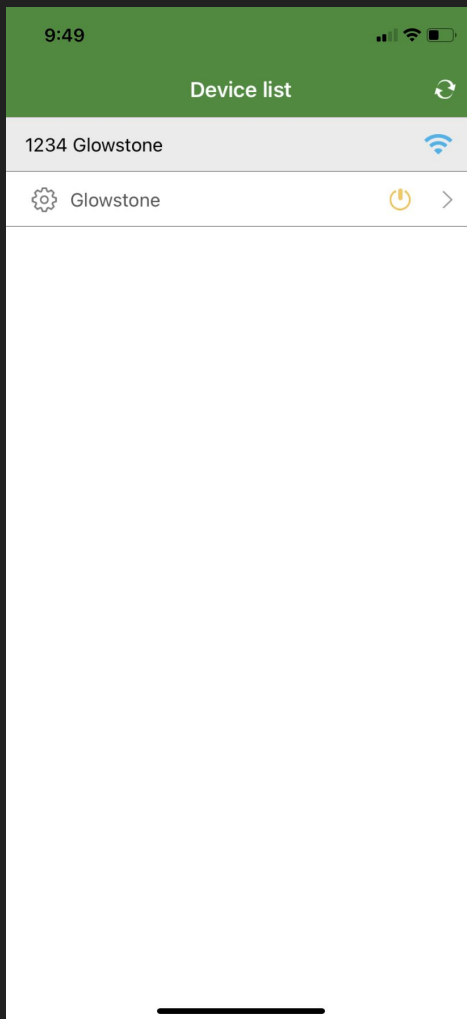
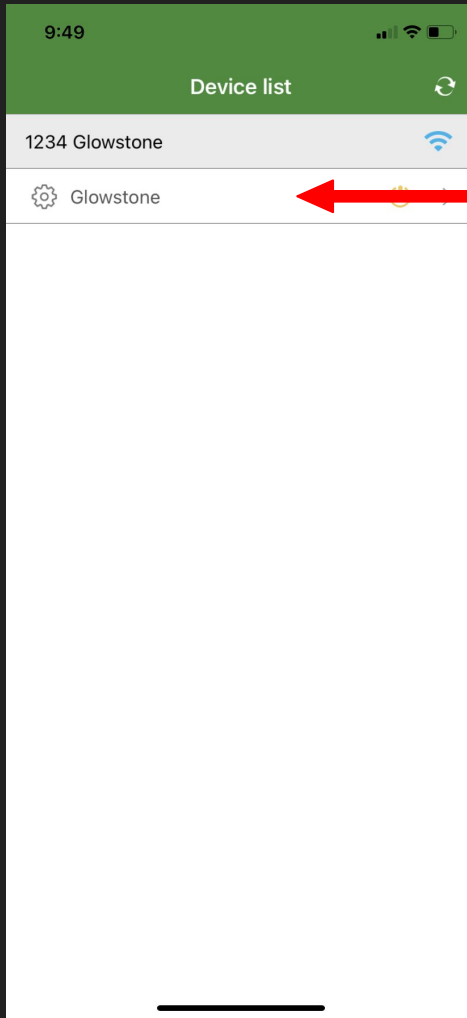


Editing Colours in the Skydance App

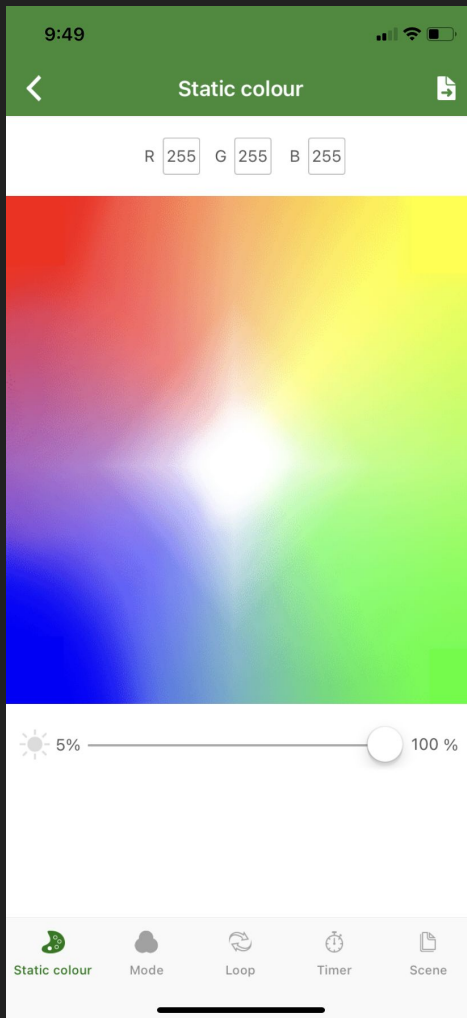
This is the first page you will see when you enter the skydance app.



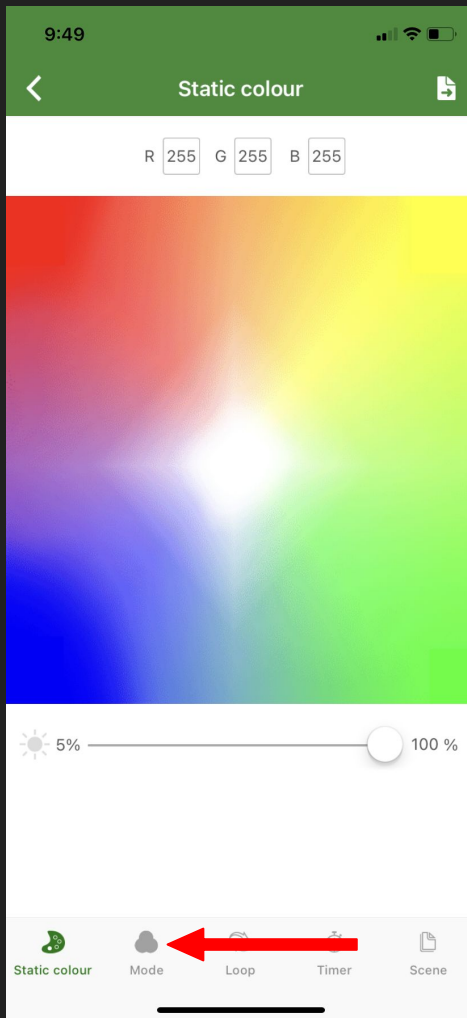


Click anywhere on this bar to begin customizing your lights.

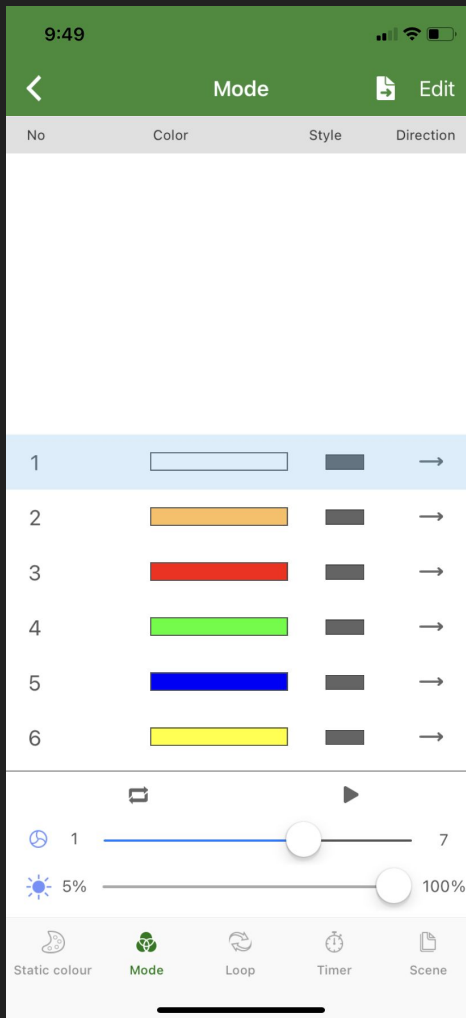
Doing this will take you to the “Static colour” page.



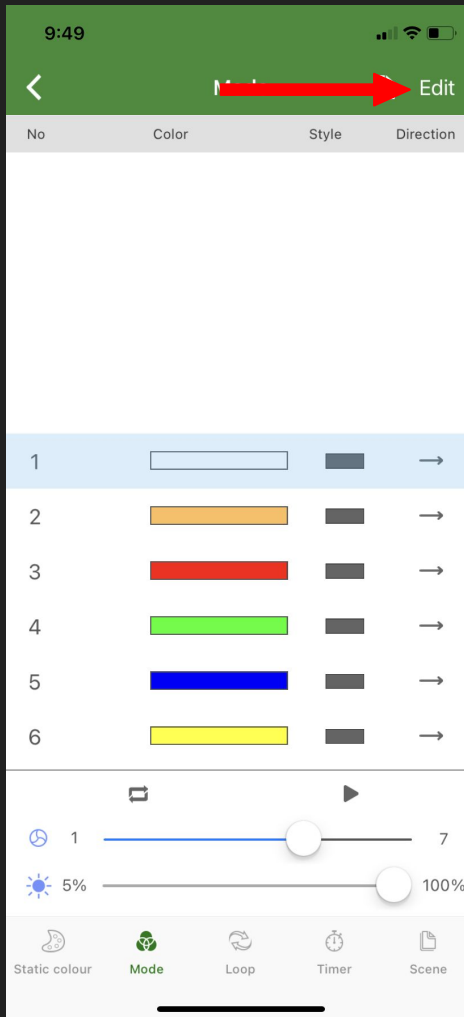
Click on the “Mode” icon on the bottom toggle bar.



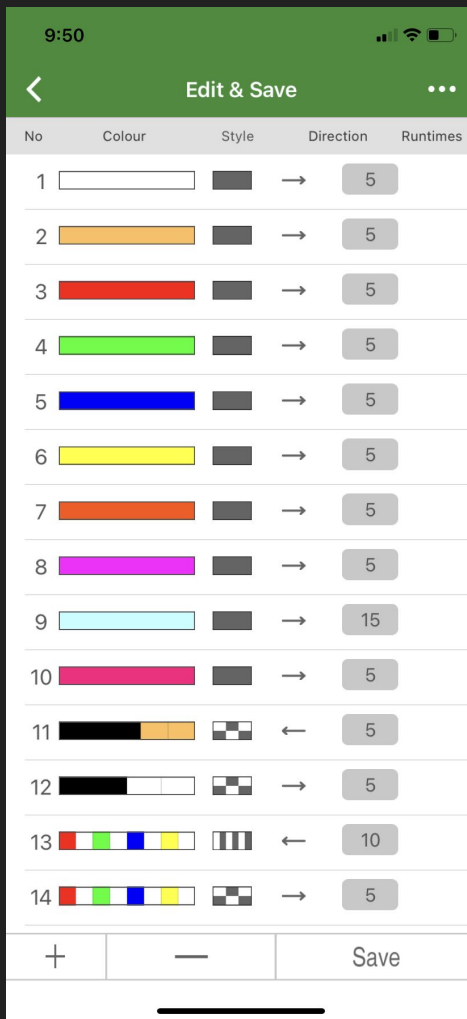
Now you are on the “Mode” page.



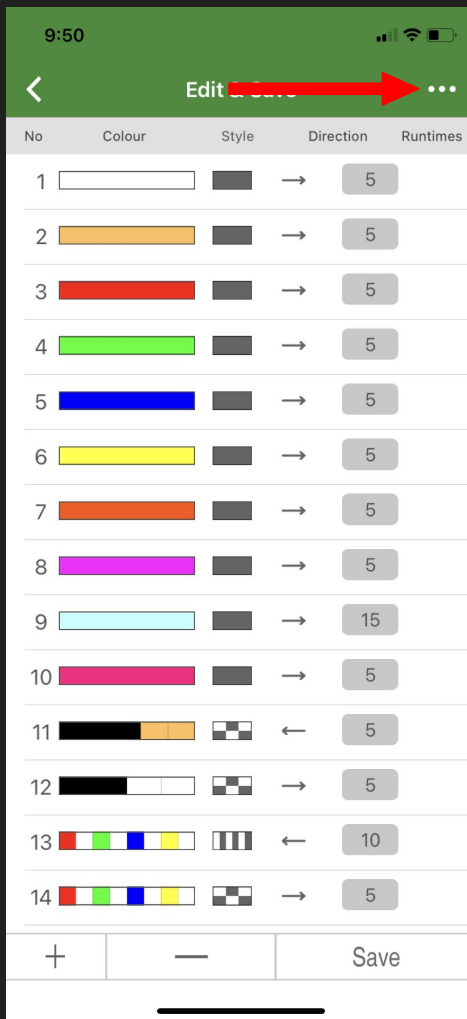
Click "Edit" in the top right corner.



Now you are on the “Edit & Save” page. We will need to go one step further to edit colours.



Click on the 3 dots in the top right corner.



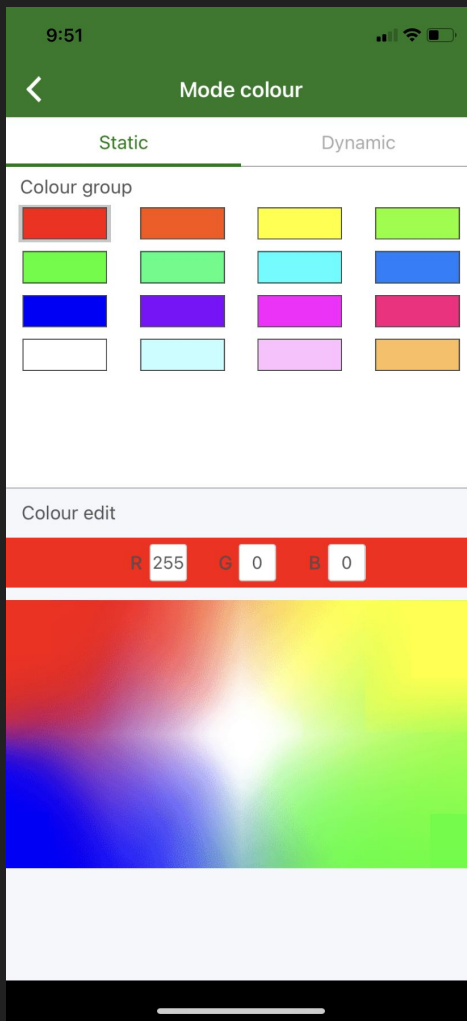
There will be a drop down with 4 options

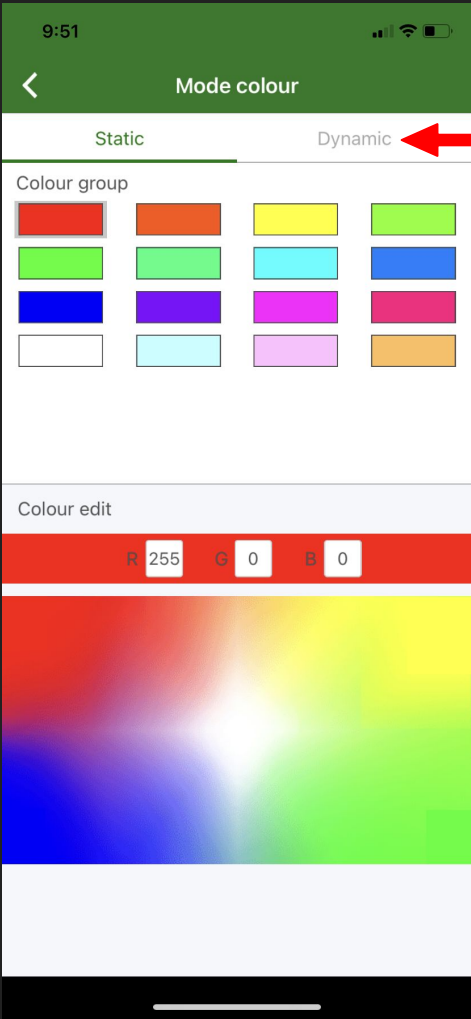


Choose "Edit Color"



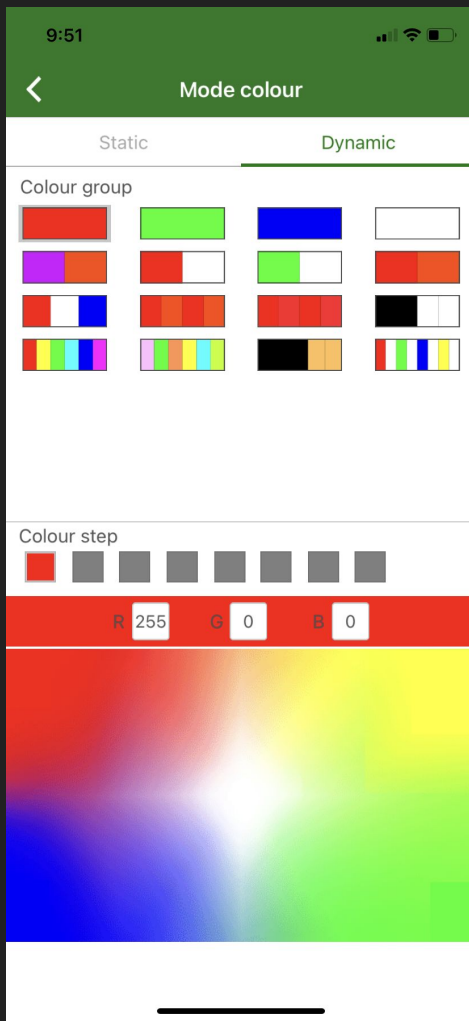
Now you are on the static portion of the “Mode colour” page



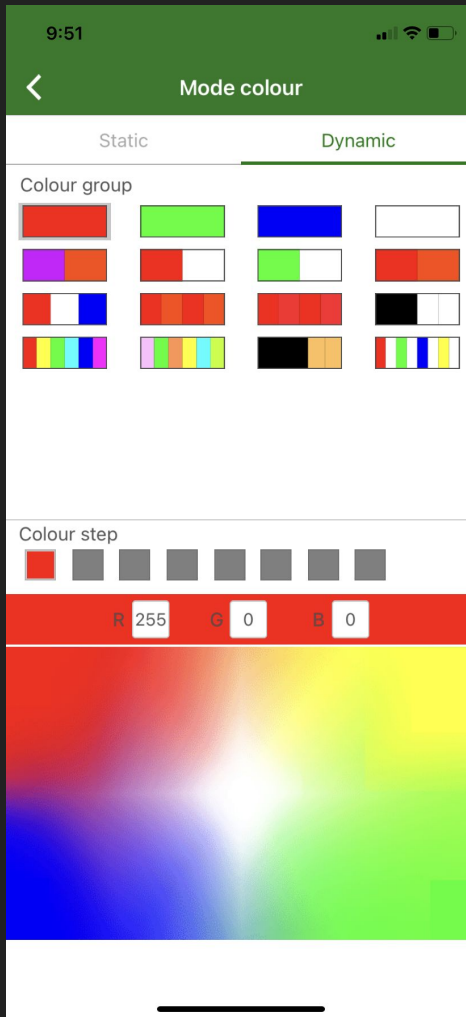


Click on "Dynamic"

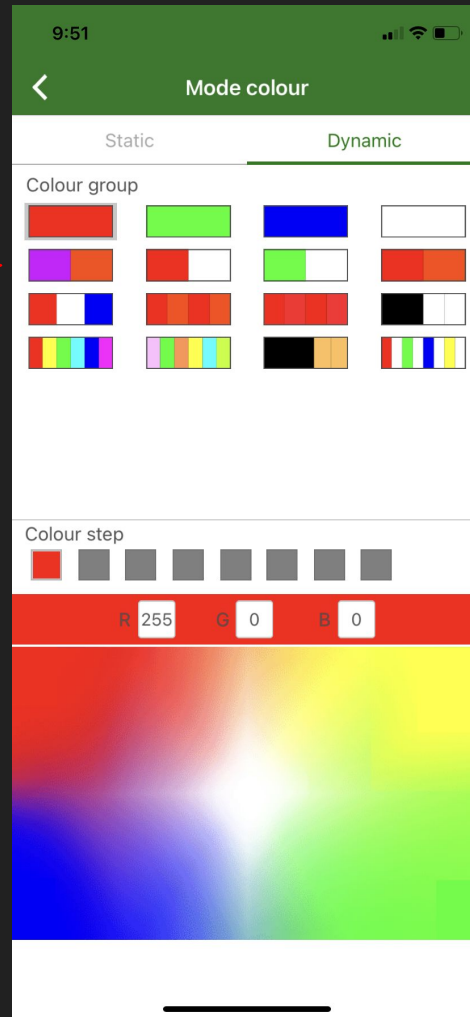
Now you are on the dynamic portion of the “Mode colour” page. From here you can edit any of these colour combinations.

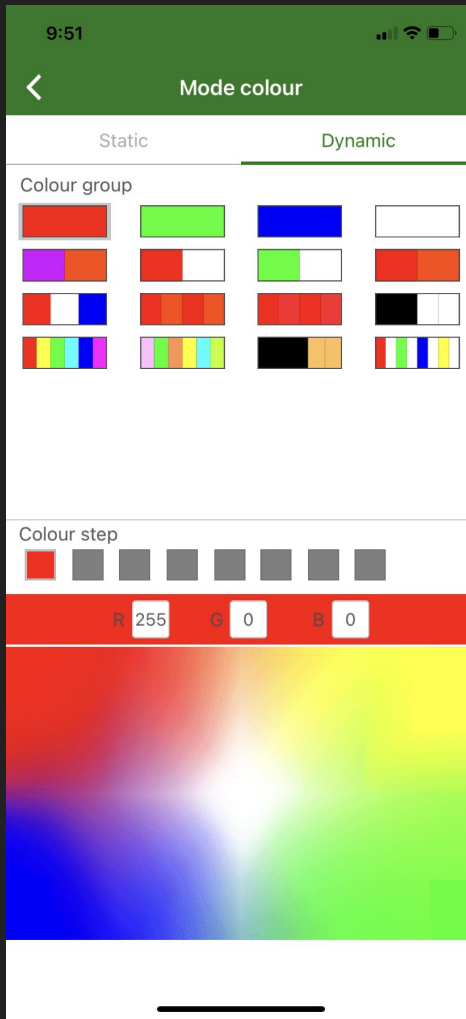


This row gives you 1 colour to edit.



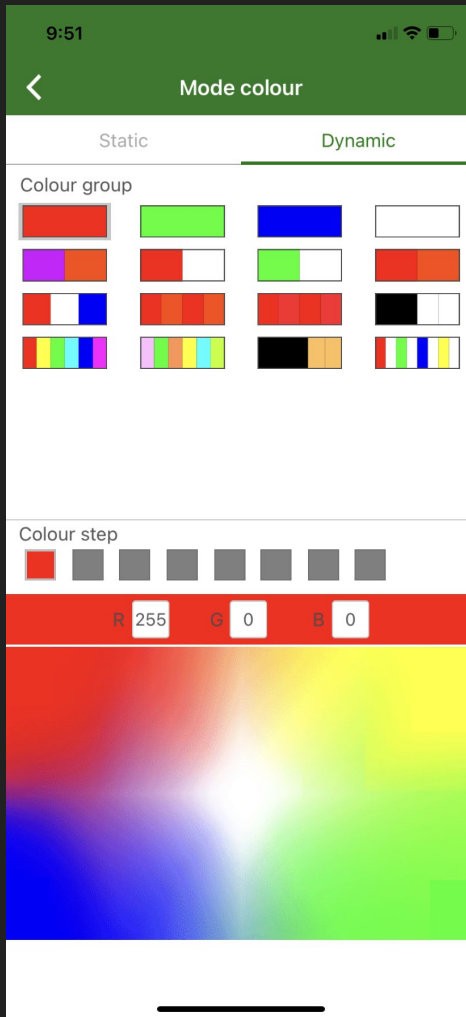
This row gives you 2 colours to edit.





This row gives you 4 colours to edit.

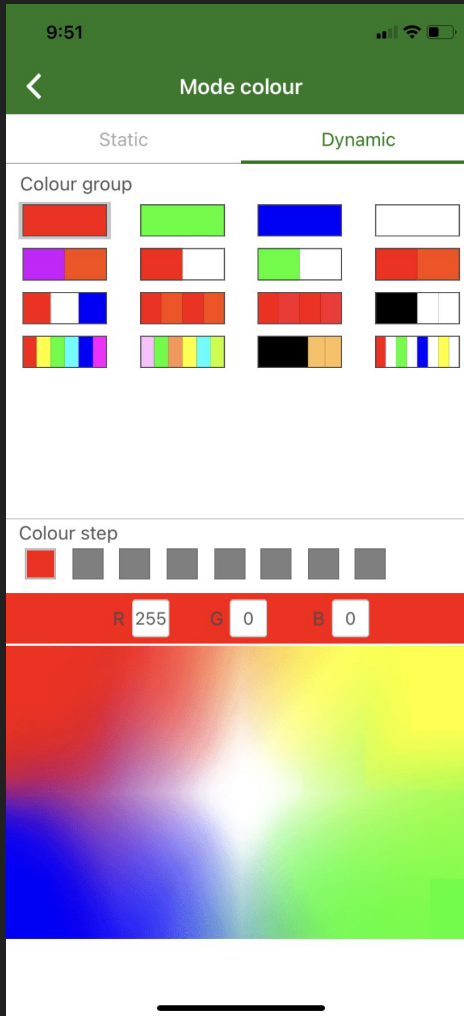




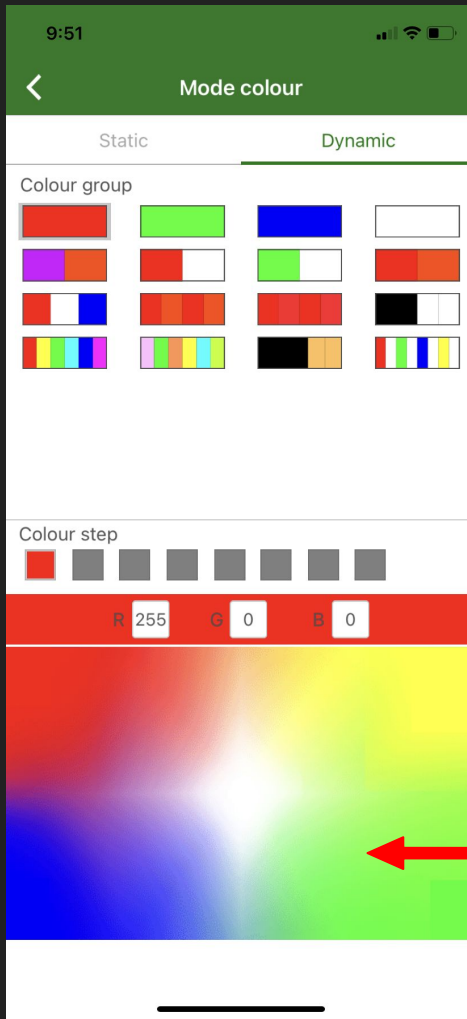
This row gives you 8 colours to edit.



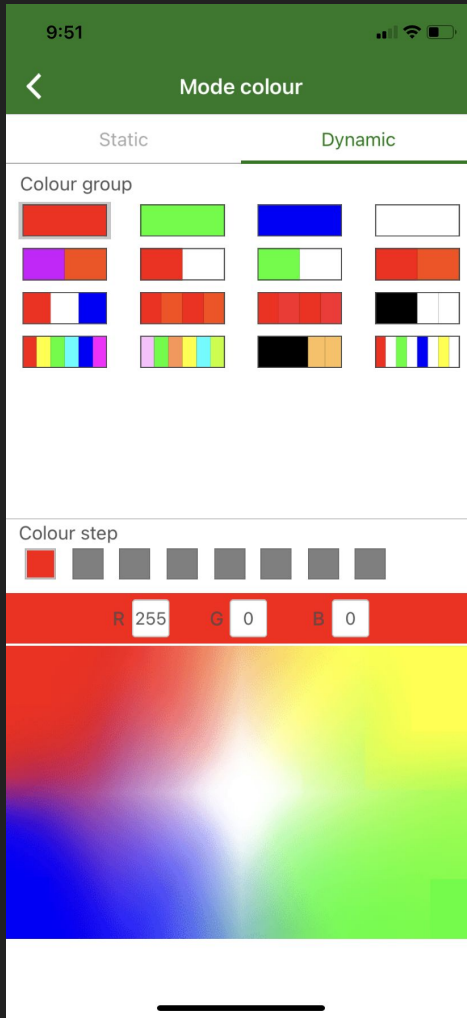
Once you have chosen a Colour combination to edit, choose the first square to edit the color



To edit the colour you can use the colour wheel...

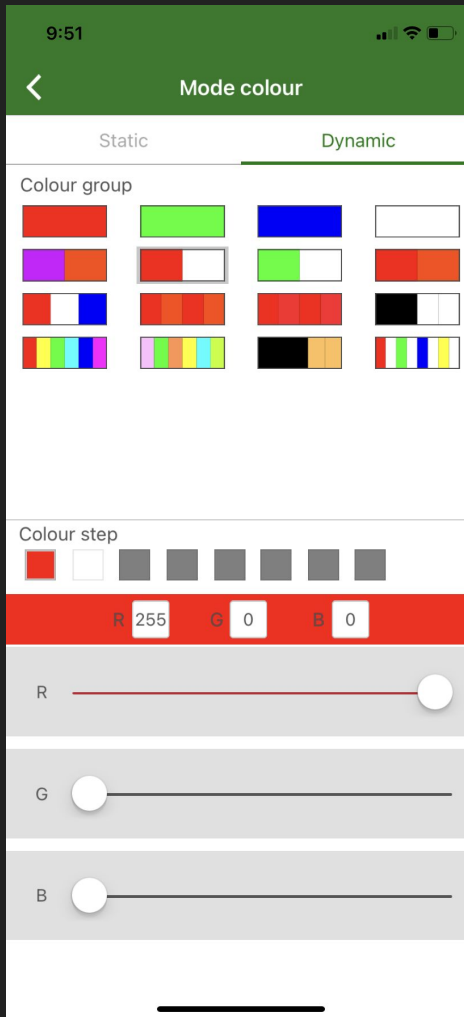


Or you can click on this bar to change the RGB code directly



Here you can change the amounts of red, green and blue in a color.

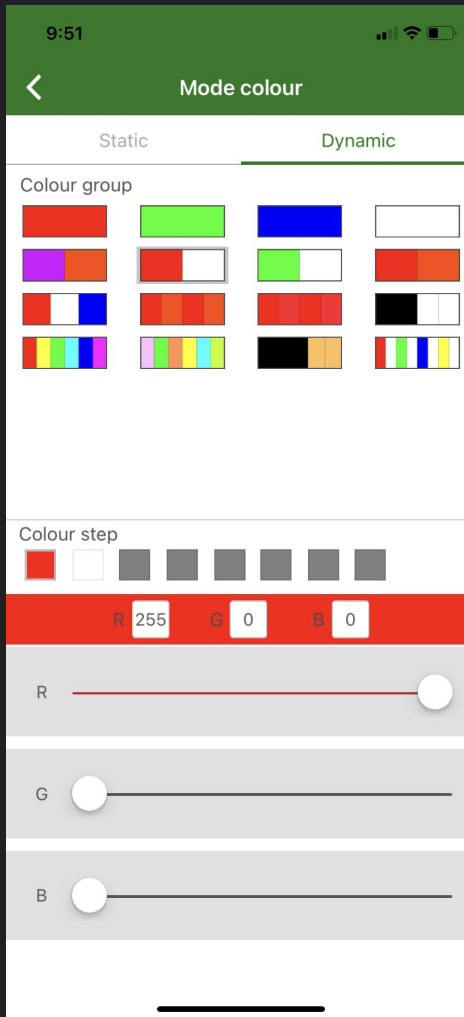
You can go online to find the specific RGB code of a sports team, flower, or shade of a color.

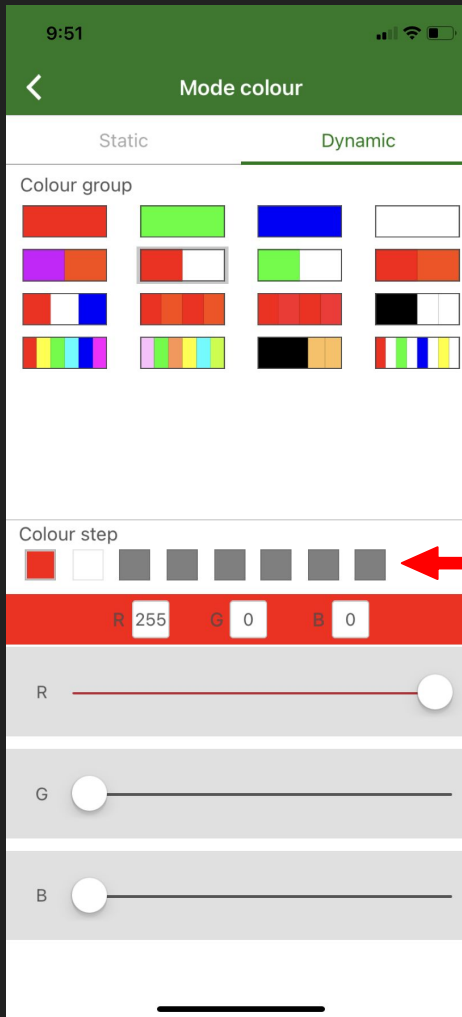


For example by looking up RGB codes for the Calgary Flames we can find that the Calgary Flames logo uses (200, 16, 46) for red, and (241, 190, 72) for yellow.



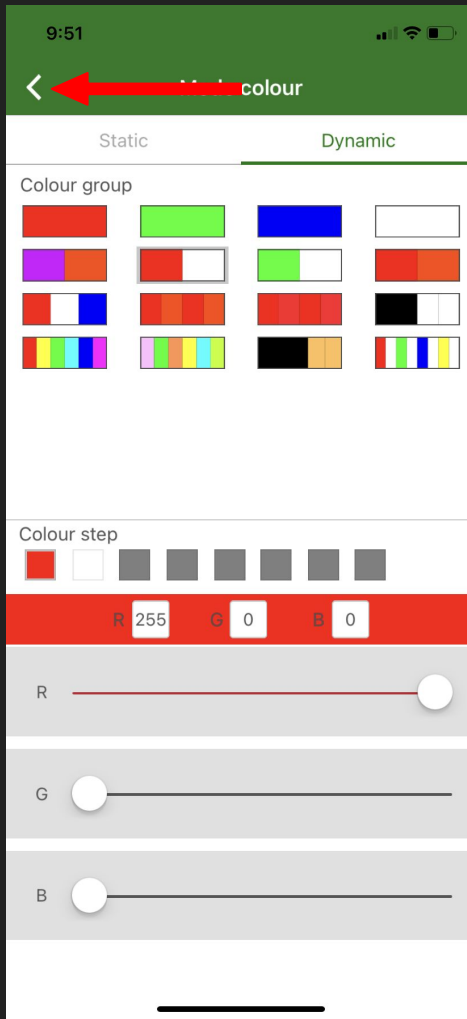
You can adjust the RGB codes by using these sliders.



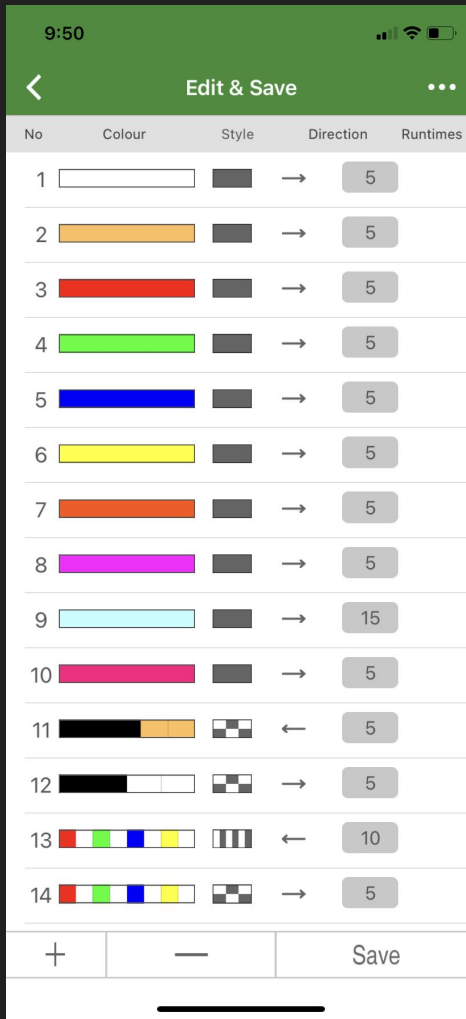


NOTE: The colour shown in these boxes is not exactly how it will appear on your house. As you change colours using the sliders or the colour wheel your lights will show the color being created. To get the desired colour look at your lights to make sure they are the colour that you want.

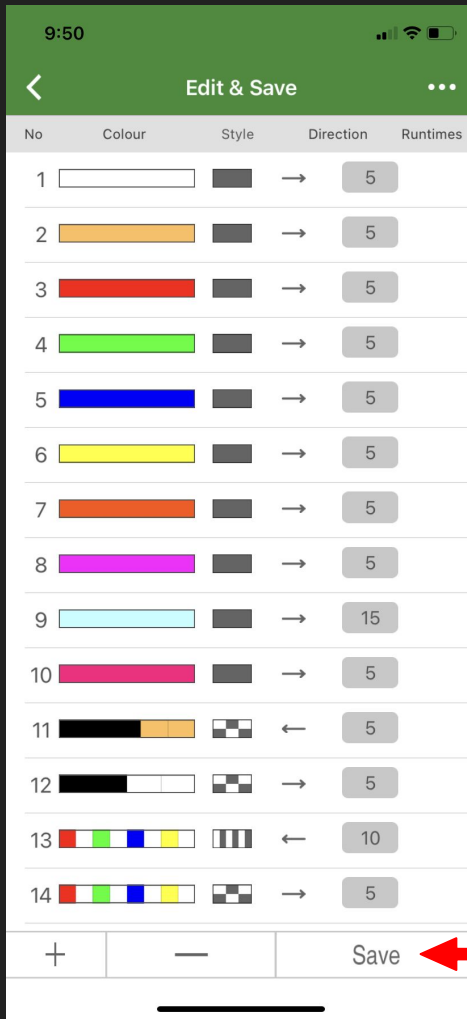
Click here to go back



Now you are back on the “Edit & Save” page.



Click "Save" to save the changes you have made.



It should say "Load success"

If it does not say "Load success"
then try again.

The screenshot shows a mobile application interface with a green header bar containing the time '9:52', signal strength, Wi-Fi, and battery icons. Below the header is a navigation bar with a back arrow, the title 'Edit & Save', and a three-dot menu icon. The main content is a list of 14 items, each with a number, a color bar, a style icon, a direction arrow, and a runtime value. Item 25 has a black tooltip with the text 'Load success' overlaid on its color bar. At the bottom, there is a navigation bar with a plus sign, a minus sign, and a 'Save' button.

No	Colour	Style	Direction	Runtimes
19	Multi-color	Checkerboard	←	5
20	Multi-color	Vertical bars	→	5
21	Red	Checkerboard	→	5
22	Red	Vertical bars	→	5
23	Red/White	Checkerboard	→	5
24	Red/White	Vertical bars	→	5
25	Green/White	Vertical bars	→	5
26	Green/White	Vertical bars	→	5
27	Orange	Vertical bars	→	5
28	Orange	Vertical bars	→	5
29	Multi-color	Vertical bars	→	5
30	Multi-color	Checkerboard	→	5
31	Orange	Checkerboard	→	10
32	Orange	Checkerboard	→	20



Click here to go back again.

9:50

< Save

No	Colour	Style	Direction	Runtimes
1	[White bar]	[Solid black]	→	5
2	[Orange bar]	[Solid black]	→	5
3	[Red bar]	[Solid black]	→	5
4	[Green bar]	[Solid black]	→	5
5	[Blue bar]	[Solid black]	→	5
6	[Yellow bar]	[Solid black]	→	5
7	[Orange bar]	[Solid black]	→	5
8	[Magenta bar]	[Solid black]	→	5
9	[Cyan bar]	[Solid black]	→	15
10	[Pink bar]	[Solid black]	→	5
11	[Black, Orange, White bar]	[Checkerboard]	←	5
12	[Black, White, White bar]	[Checkerboard]	→	5
13	[Red, Green, Blue, Yellow bar]	[Vertical stripes]	←	10
14	[Red, Green, Blue, Yellow bar]	[Checkerboard]	→	5

+ - Save



You will now be able to find your edited mode on the “Mode” page.

